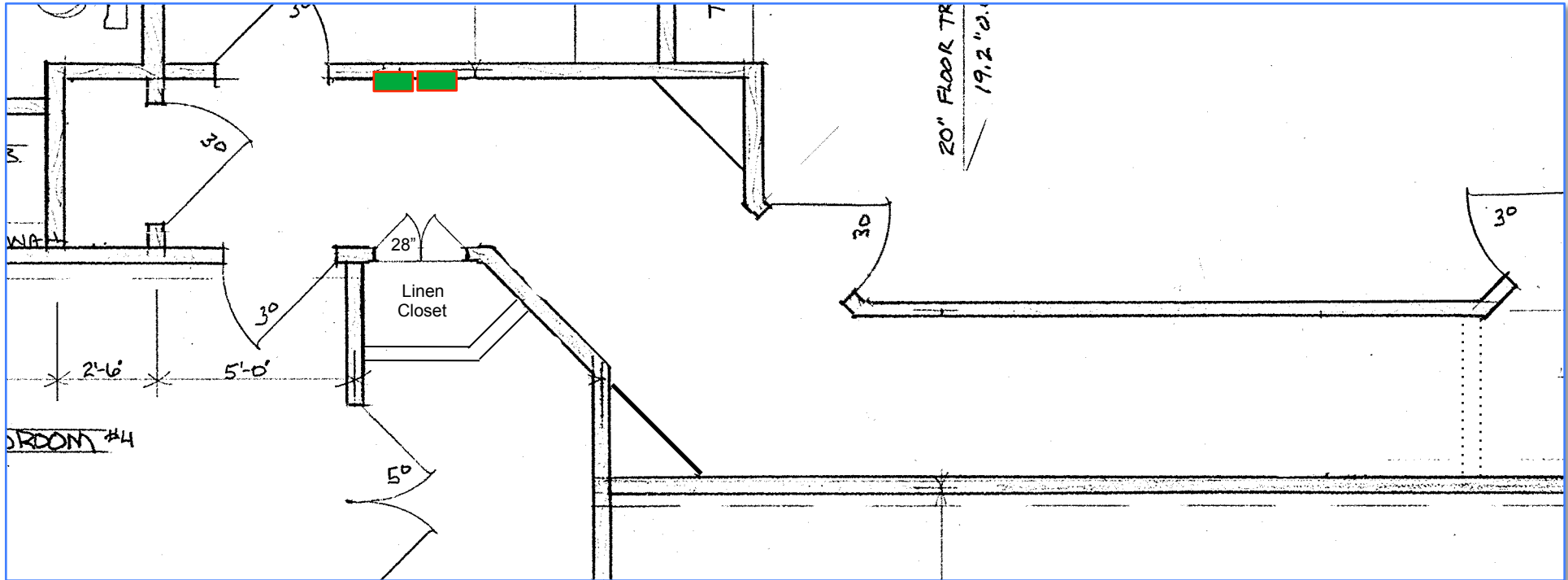




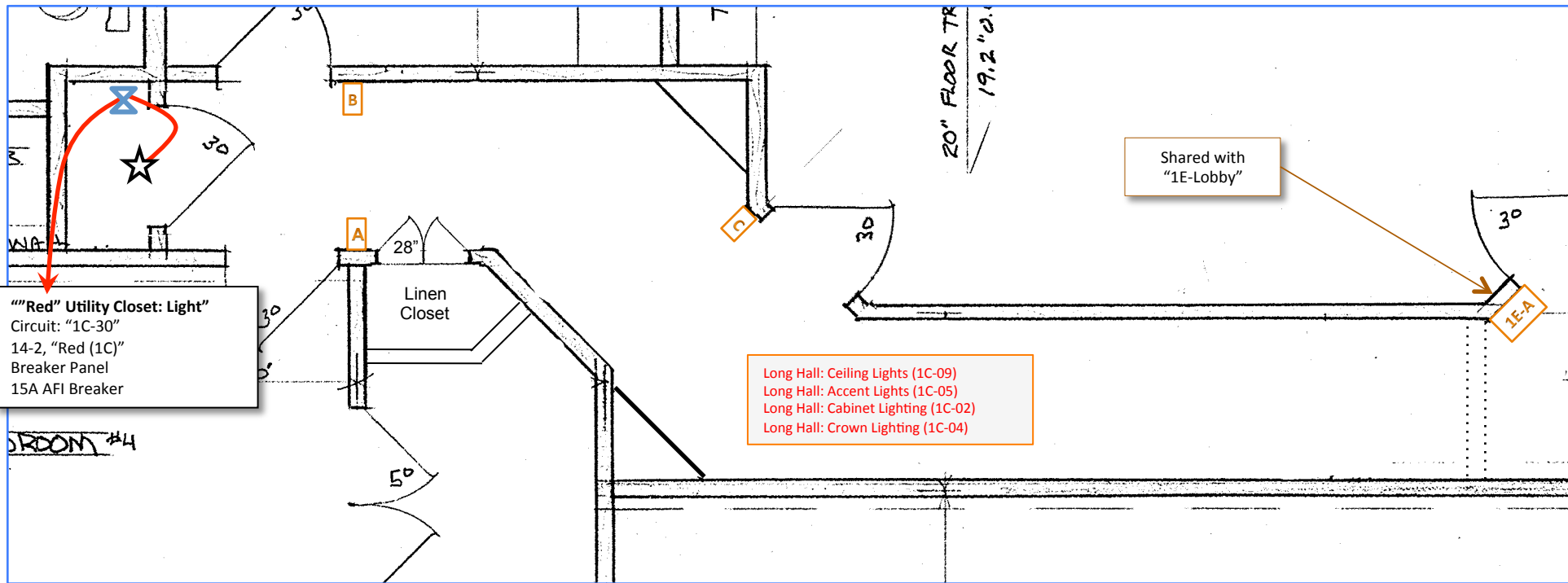
Floor Plan

Scale: 4' per inch



-  = Supply Air Duct
-  = Return Air Duct

Scale: 4' per inch



""Red"" Utility Closet: Light  
 Circuit: "1C-30"  
 14-2, "Red (1C)"  
 Breaker Panel  
 15A AFI Breaker

Long Hall: Ceiling Lights (1C-09)  
 Long Hall: Accent Lights (1C-05)  
 Long Hall: Cabinet Lighting (1C-02)  
 Long Hall: Crown Lighting (1C-04)

Shared with  
 "1E-Lobby"

X = Switch Cluster

⌘ = Standard Switch

Scale: 4' per inch

# 1C - Long Hall

# Lighting Keypads 1

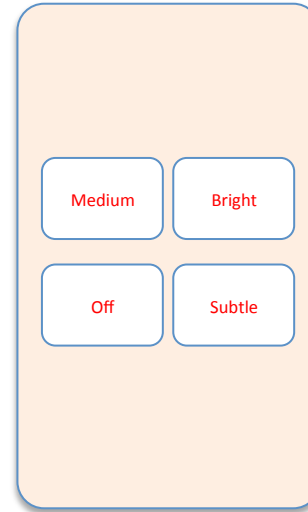
**Keypad Location 1C-A**  
Bedroom 4 Entry



Long Hall: Ceiling Lights (1C-09)  
 Long Hall: Accent Lights (1C-05)  
 Long Hall: Cabinet Lighting (1C-02)  
 Long Hall: Crown Lighting (1C-04)

Cables  
1 – Red

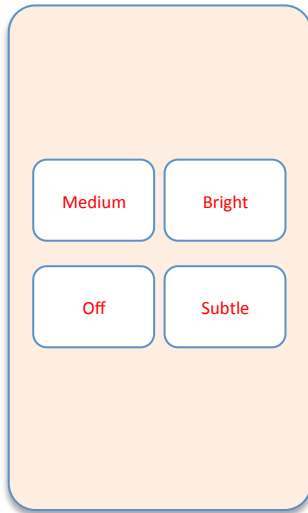
**Keypad Location 1C-B**  
Bedroom 5 Entry



Long Hall: Ceiling Lights (1C-09)  
 Long Hall: Accent Lights (1C-05)  
 Long Hall: Cabinet Lighting (1C-02)  
 Long Hall: Crown Lighting (1C-04)

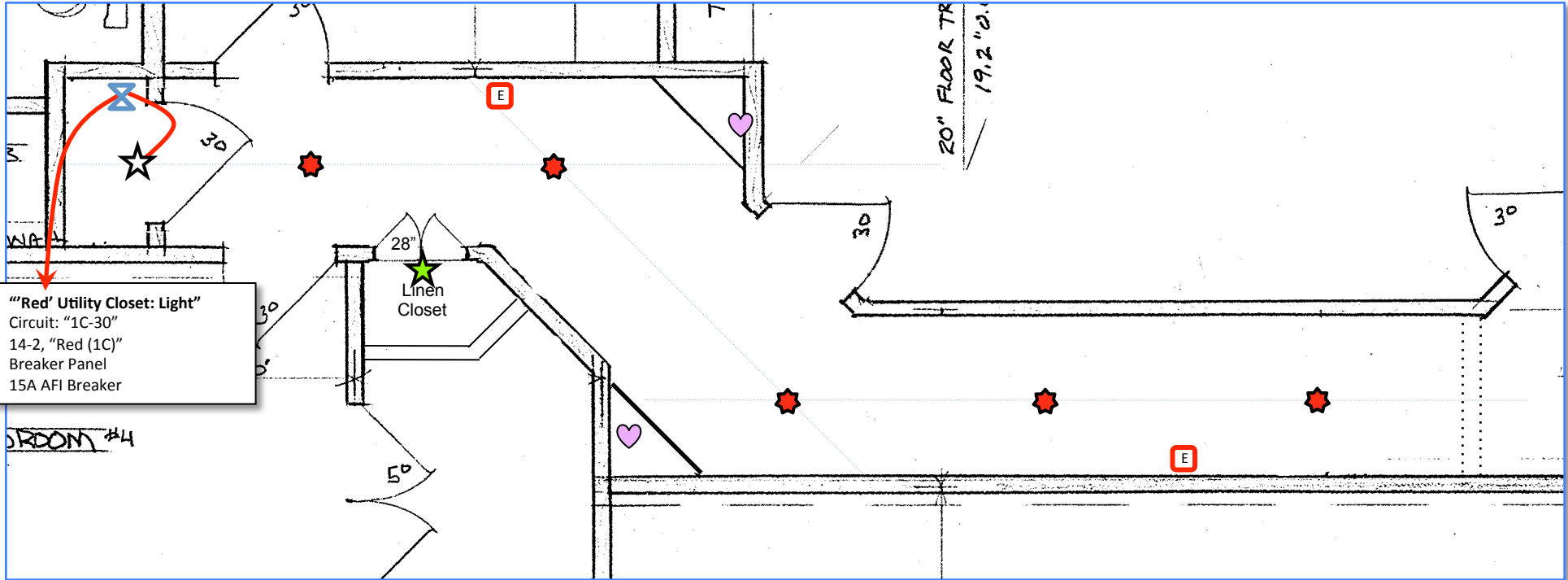
Cables  
1 – Red

**Keypad Location 1C-C**  
Fitness Room Entry



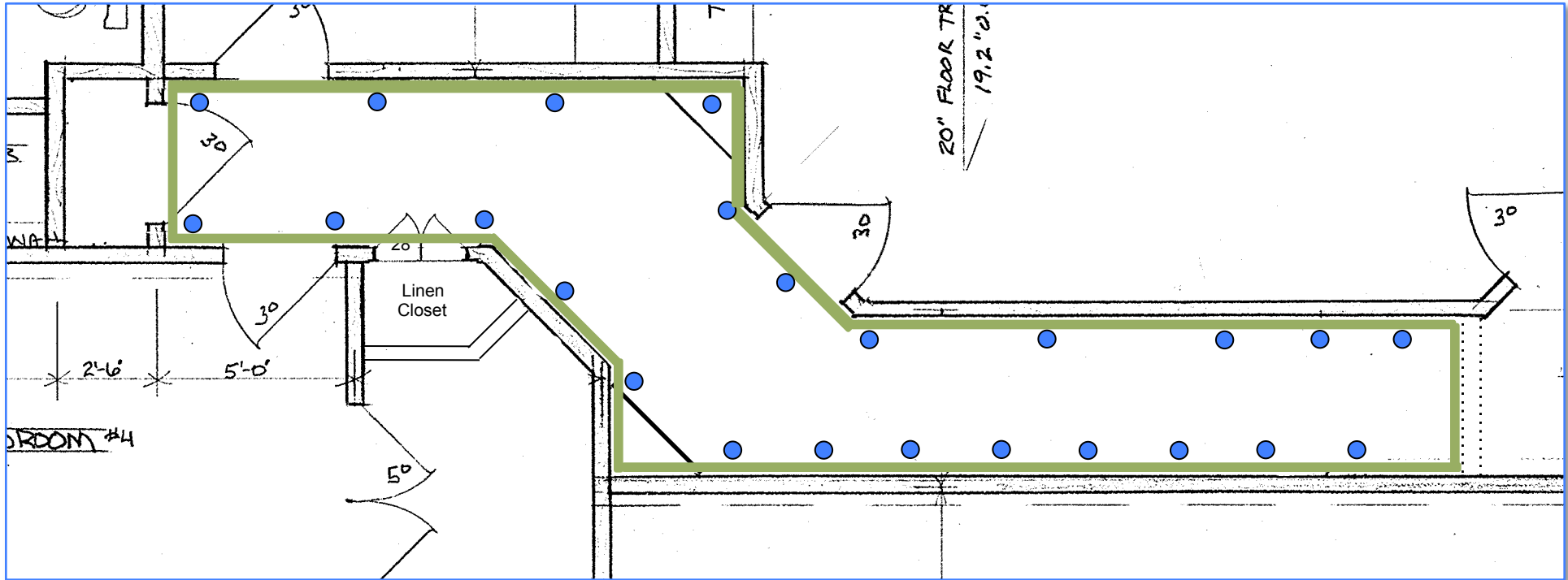
Long Hall: Ceiling Lights (1C-09)  
 Long Hall: Accent Lights (1C-05)  
 Long Hall: Cabinet Lighting (1C-02)  
 Long Hall: Crown Lighting (1C-04)

Cables  
1 - White



- ★ = Surface Fixture (1C-01)
- ★ = Closet Lighting
- ♥ = Cabinet Light (1C-02)
- E = Standby Light
- ★ = Linen Closet Lighting (1C-03)

Scale: 4' per inch

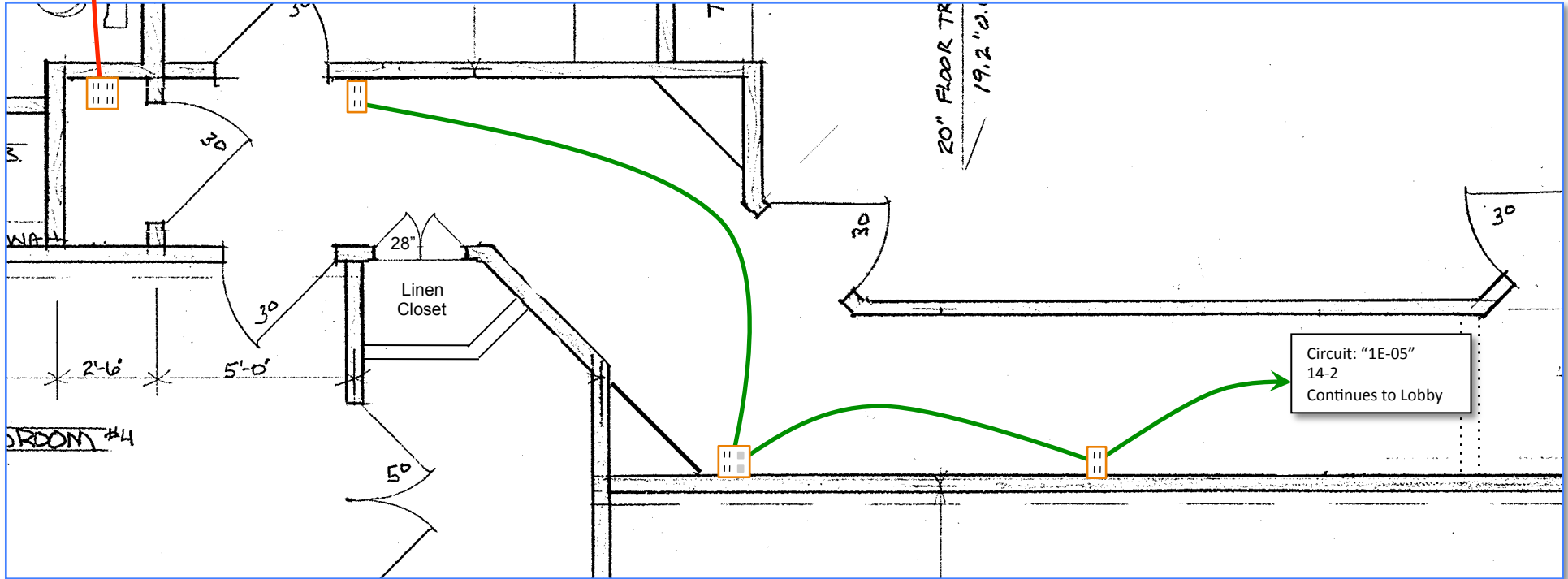


● = Wall Lighting (LED Pucks – 12 Pairs) (1C-T05)




— = Crown Lighting (1C-T04) (LED Strip ~78 lineal ft)

Scale: 4' per inch

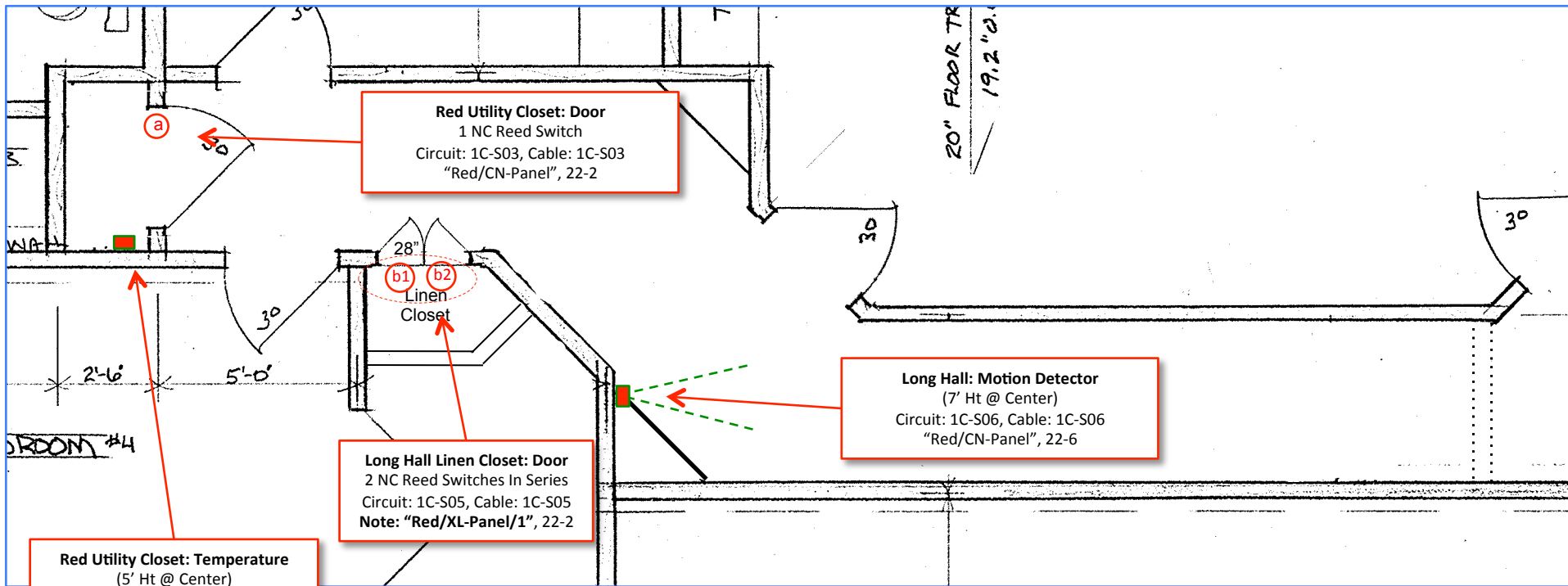
Circuit: "1C-06"  
 14-2, "Red (1C)"  
 Breaker Panel  
 Std Breaker



Circuit: "1E-05"  
 14-2  
 Continues to Lobby

 = 15A Duplex    
  = 15A Quad    
  = 15A Duplex / LAN / Phone

Scale: 4' per inch



**Red Utility Closet: Door**  
 1 NC Reed Switch  
 Circuit: 1C-S03, Cable: 1C-S03  
 "Red/CN-Panel", 22-2

**Long Hall Linen Closet: Door**  
 2 NC Reed Switches In Series  
 Circuit: 1C-S05, Cable: 1C-S05  
 Note: "Red/XL-Panel/1", 22-2

**Long Hall: Motion Detector**  
 (7' Ht @ Center)  
 Circuit: 1C-S06, Cable: 1C-S06  
 "Red/CN-Panel", 22-6

**Red Utility Closet: Temperature**  
 (5' Ht @ Center)  
 Elk Temp Sensor  
 Circuit: 1C-S04, Cable: 1C-S04  
 Note: "White/CN-Panel/1", 22-4

(x) = NC Door/Window Sensor  
 (Concealed Reed)

Scale: 4' per inch



**Long Hall: Smoke Detector**  
Circuit: 1C-S07

---

**Long Hall: CO Detector**  
Circuit: 1C-S08

---

(Above Closet Door)  
Cable: 1C-S07/08  
"Red/CN-Panel", 22-6

**Long Hall: Thermostat**  
(62" ht @ center)  
RCS TRS60  
Circuit: 1C-A02, Cable: 1C-A02  
"Yellow/HVAC-Group", Cat 5e

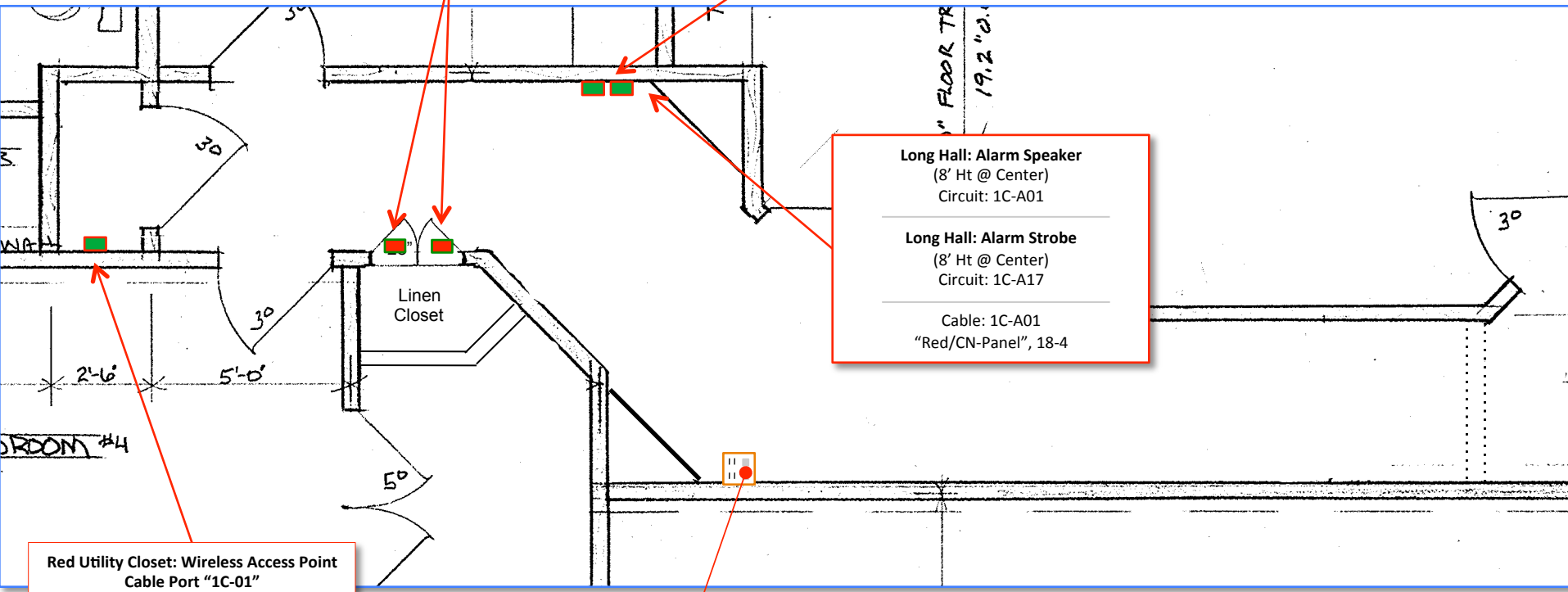
**Long Hall: Alarm Speaker**  
(8' Ht @ Center)  
Circuit: 1C-A01

---

**Long Hall: Alarm Strobe**  
(8' Ht @ Center)  
Circuit: 1C-A17


---

Cable: 1C-A01  
"Red/CN-Panel", 18-4

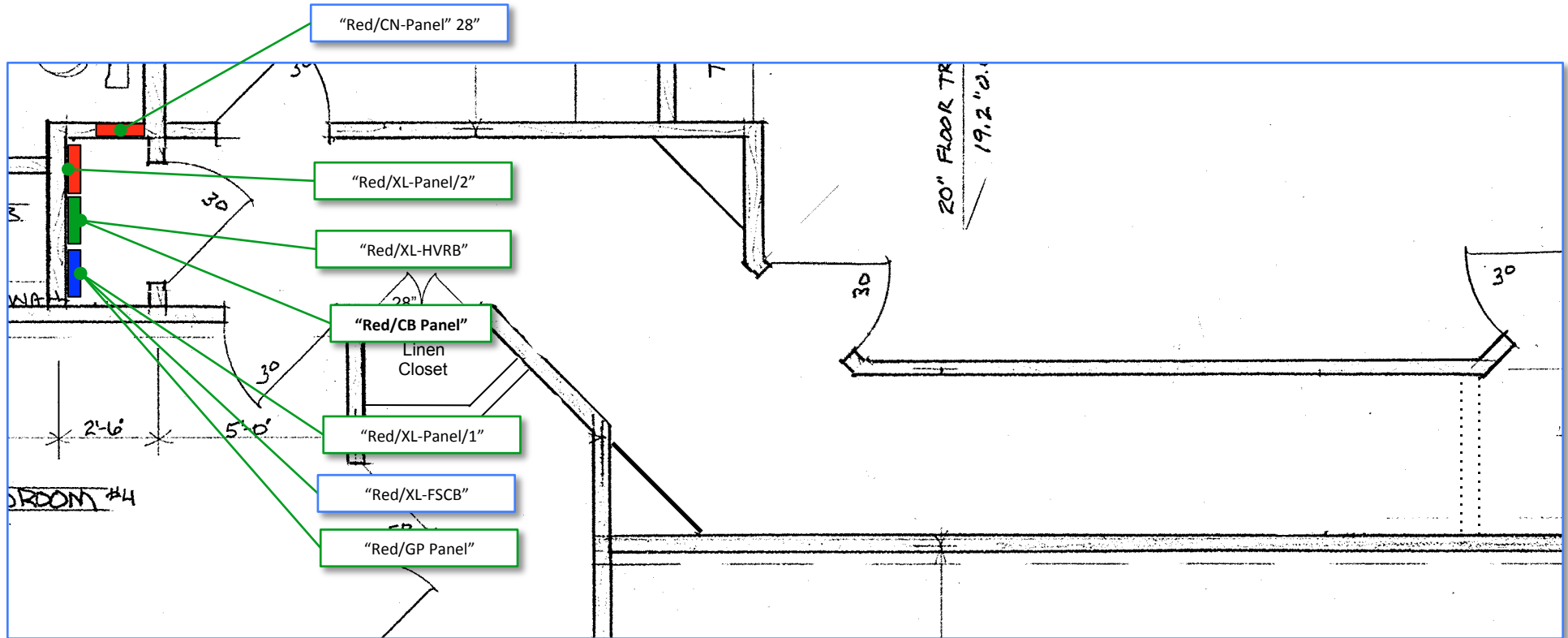


**Red Utility Closet: Wireless Access Point  
Cable Port "1C-01"**  
East Wall In Closet  
(POE From White/Eq-Rack/2)  
Note: LAN: 1C-C03

**Cable Port "1C-02"**  
(14" Height)  
LAN: 1C-C01  
Phone: 1C-C02  
White/Eq-Rack/2

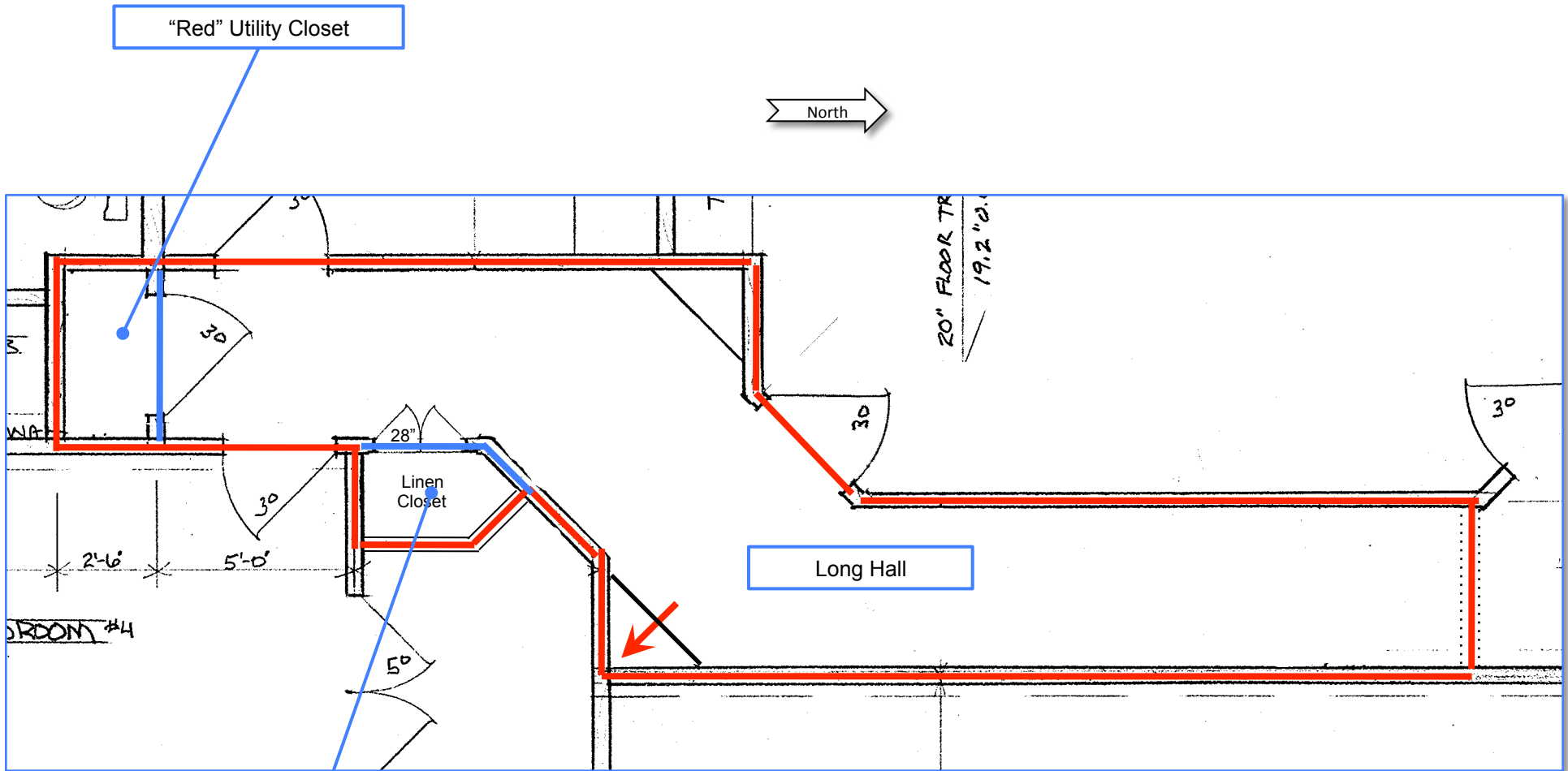
 = 15A Duplex / LAN / Phone

Scale: 4' per inch



Electrical Cabinets

Scale: 4' per inch



Long Hall Linen Closet

— = Region Boundary

↙ = Region Anchor Point (Corner)

Scale: 4' per inch

Region Overview

